



1. SEN SUPPORT IN SCHOOLS



Before you meet:
Write down your concerns and points to raise. Consider taking a friend or partner to make notes so you can concentrate on the conversation.

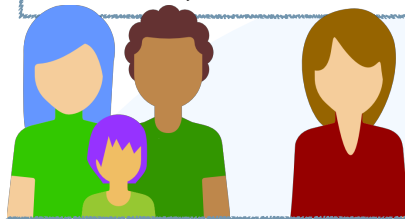
If you disagree at any point, you can ask to involve the Disagreement Resolution service or speak to the Information, Advice & Support Services Network

IF YOUR CHILD'S NEEDS ARE CLEARLY SEVERE, AN EHCP ASSESSMENT MAY BE REQUESTED WITHOUT THE SEN SUPPORT STAGE (OR CONDUCTED BEFORE SCHOOL AGE)

START HERE:

YOU, OR YOUR CHILD'S SCHOOL ARE CONCERNED THAT YOUR CHILD MAY HAVE A SPECIAL EDUCATIONAL NEED

Meet with your child's class teacher and/or SENCo to discuss concerns



Agree on a plan of action using the Assess, Plan, Do, Review cycles & decide together which external assessments will be needed

Work with the school to see what services from the Local Offer your child can access to help them overcome any barriers to learning

If your child has a medical condition, ask to see your school's policy that complies with the Government's Statutory Guidance Supporting pupils at school with medical conditions. Ask how these guidelines can be used to support your child, if necessary

If progress is made, continue the cycle of Assess, Plan, Do, Review. However, at any point, if you feel the interventions are not working, you can choose to apply for a statutory assessment for an Education, Health and Care Plan

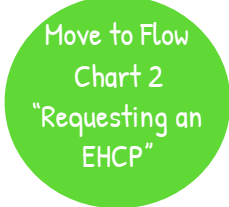
Make sure you meet the expert after they have carried out any external assessment on your child, so you can give them any extra information. You know your child better than anyone and your input is vital

There may come a point at which you agree your child has made sufficient progress and no further support is required. However, you can ask for SEN help again at any point if you think it is needed.

When the report(s) have been received ask to meet with the class teacher and SENCo again to revise any interventions in the light of the report recommendations. Agree a date for initial review

An EHCP can be requested by parent, young person, teacher or anyone else concerned about the child's SEN

On the review date, discuss with the teacher/SENCo how the interventions are working, any changes that need to be made and a further review date



WHERE, DESPITE THE SCHOOL HAVING TAKEN RELEVANT AND PURPOSEFUL ACTION TO IDENTIFY, ASSESS AND MEET THE SEN OF THE CHILD OR YOUNG PERSON, THE CHILD OR YOUNG PERSON HAS NOT MADE EXPECTED PROGRESS, THE SCHOOL OR PARENTS SHOULD CONSIDER REQUESTING AN EDUCATION, HEALTH AND CARE NEEDS ASSESSMENT.

When your application has been received, you should be given the details of your local SENDIASS who will be able to advise and support you through the process. These are free and impartial services who provide information, advice and support to children, young people and parents on a range of SEND issues, including your EHCP application. You can also search for resources on the Special Needs Jungle site and on the IPSEA website, among others.